

# STUDENTS' AID GUIDE

of the University of Franche-Comté



*Dear students*

*The health crisis has turned all our daily lives upside down since march 2020, especially your lives.*

*You should be discovering university by now, pursuing your education, whereas you have to face multiple upheavals. Those may relate either to practicalities (furniture, distance learnings) or to basic expenses such as housing, food, office supplies. Sometimes the upheavals can be psychological, and you may need help to overcome isolation. Difficulties can also occur when forging social ties. You may be waiting for answers, without knowing where to look.*

*The Student Office (BVE) of the university remains at your disposal to guide you. In order to facilitate your formalities, I had a Student's Aid Guide written for you. It lists all the services and supports for which you are eligible. That guide also includes the aids that are dedicated for you. It will be regularly updated, to optimally meet your needs.*

*Your quality of life is a priority mission of the university. Supporting you through your academic life is not only our function: it is our commitment.*

*Macha Woronoff,  
President of the University of Franche-Comté*

# STUDENTS' AID GUIDE

## of the University of Franche-Comté

In the current context and the health crisis we are going through, the Office of Student Life (BVE) becomes the key contact for any question or request on the emergency aids and support programs set up by the University of Franche-Comté as well as by its different partners.

The BVE is thus available to centralize the requests for student aid that you may receive, to direct you, to promote and facilitate the already existing procedures, but also to maintain the link with the « Student Life » team which works every day to improve the living conditions of the students of the University of Franche-Comté.

If you have set up or wish to set up aid (support, distribution, donations, etc.) to students, the BVE is also your key contact. It is important to give to this team the most precise description of your action as well as your privileged targets so that it can communicate about it and direct the requests.

For any of these reasons, please send an email to the following address : [bve-infos@univ-fcomte.fr](mailto:bve-infos@univ-fcomte.fr)

### TYPES OF AID

#### DURING THE BACK TO SCHOOL SEASON

DESCRIPTIONS	WHO PROVIDES THIS AID/SUPPORT?	HOW?	WHO IS ENTITLED TO IT?	DURATION
<p><b>Reception of french and international students, access to CROUS services (accommodation, scholarship, catering, campus life), partner services (Family Allowances Office, transport companies, bank, insurance) - City tour with an anglophone guide, administrative procedures support</b></p>	<p>BAM : bureau accueil multiservice (multi-service reception desk)</p>	<p><a href="http://www.bienvenueauxetudiants.org/bam">www.bienvenueauxetudiants.org/bam</a></p>		<p>From 12th to 15th september in Besançon</p> <p>22nd September in Belfort</p> <p>29th September in Montbéliard</p>
<p><b>Presentation and meetings with the associations and partners</b></p>	<p>Bienvenue aux étudiants</p>	<p><a href="http://www.bienvenueauxetudiants.org">www.bienvenueauxetudiants.org</a></p>	<p>Students of Franche-Comté</p>	<p>From 12th to 15th september in Besançon</p> <p>22nd September in Belfort</p> <p>29th September in Montbéliard</p>

## DIGITAL AND COMPUTER ASSISTANCE



DESCRIPTIONS	WHO PROVIDES THIS AID/SUPPORT?	HOW?	WHO IS ENTITLED TO IT?	DURATION
<b>Loan of fixed and portable PCs</b>	University of Franche-Comté Common Service of Documentation (scd)	<a href="http://scd.univ-fcomte.fr">scd.univ-fcomte.fr</a>		
<b>Loan of PCs by the Faculties of the university of Franche-Comté</b>	University of Franche-Comté Computer services of the Faculties	Contact the Faculties	Students of Franche-Comté	Permanent
<b>Partnership with "Emmaüs Connect"</b> to fight against the digital divide in the long term (solidarity prices)	University of Franche-Comté Student Life Office	<a href="mailto:bve-infos@univ-fcomte.fr">bve-infos@univ-fcomte.fr</a> 03 81 66 66 99		

## FOOD AND MATERIAL AID



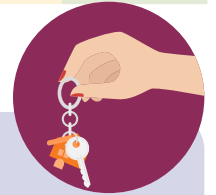
DESCRIPTIONS	WHO PROVIDES THIS AID/SUPPORT?	HOW?	WHO IS ENTITLED TO IT?	DURATION
<b>Fighting against the period poverty</b> : setting up of free periodical protections distributors in the university premises	University of Franche-Comté	List of the distributors : <a href="https://www.univ-fcomte.fr/sites/default/files/liste_emplacements_boites.pdf">https://www.univ-fcomte.fr/sites/default/files/liste_emplacements_boites.pdf</a>	Students of Franche-Comté	Permanent
<b>Fighting against the period poverty</b> : setting up of free periodical protections distributors in the student residences	CROUS	<a href="http://www.crous-bfc.fr/actualite/lutte-contra-la-precarite-menstruelle">www.crous-bfc.fr/actualite/lutte-contra-la-precarite-menstruelle</a>	Students of Franche-Comté	Permanent
<b>Food aid, AGORAE, solidarity grocery shop</b>	LA BAF Federation of Franc-Comtois Students	<a href="mailto:agorae@baf-fc.fr">agorae@baf-fc.fr</a> 03 81 66 58 62	Students in Besançon	Currently every Wednesdays from 6pm to 8pm. Campus de la Bouloie in Besançon
<b>Food and material aid</b>	Croix rouge	Belfort 03 84 28 00 48 Montbéliard 03 81 91 15 28 Vesoul 03 84 75 22 19 Besançon 03 81 81 21 63 Pontarlier 03 81 36 16 02		Permanent
<b>Food aid</b>	CROUS	<a href="http://www.mesrdvetudiant.gouv.fr">www.mesrdvetudiant.gouv.fr</a>		Permanent
<b>Distribution of clothes at solidarity prices</b>	Secours Catholique	03 81 94 09 14		Permanent
<b>Distribution of food and clothing aid</b>	Restos du Cœur	Besançon 03 81 50 75 92 Belfort 09 81 65 38 54 Montbéliard 03 81 97 10 62 Pontarlier 03817258 Lons-le-Saunier 03 84 24 16 52	Students of Franche-Comté	Occasional Contact them for opening hours
<b>Distribution of food and clothing aid</b>	Secours Populaire	Belfort : 03 84 22 83 09 Montbéliard : 03 84 22 83 09 Besançon : 03 81 81 63 91		Every Friday from 5pm to 7pm. Address: 10 rue Paul Bert in Belfort. Thursday from 4.30 pm to 18 h / 2 € / basket

## FOOD AND MATERIAL AID



DESCRIPTIONS	WHO PROVIDES THIS AID/SUPPORT?	HOW?	WHO IS ENTITLED TO IT?	DURATION
<b>Second-hand solidarity store</b>	Emmaüs	Vesoul 03 84 75 34 34  Pontarlier 03 81 46 65 91	Students of Vesoul and Pontarlier	Wednesday 2pm to 5pm and Saturday 9am-12pm and 2pm-5pm in Vesoul Monday to Saturday 8am-7pm in Pontarlier
<b>Solidarity thrift store</b>	Ding Fring	Lons-le-Saunier 03 85 41 23 49	Students of Lons-le-Saunier	From monday to saturday 9:30am-7pm
<b>Distribution of equipment and clothing</b>	Bibliothèque Universitaire Proudhon  Studio 45	<a href="mailto:isabelle.pichegru@univ-fcomte.fr">isabelle.pichegru@univ-fcomte.fr</a>	Students in Besançon	Permanent
<b>Distribution of clothes at solidarity prices</b>	Friperie 60	03 81 82 29 96	Students Besançon / Montbéliard	
<b>Food, materials and clothing aid</b>	Lions Clubs International	<a href="mailto:annacupillard@orange.fr">annacupillard@orange.fr</a> <a href="https://www.facebook.com/Lions-Club-Besancon-Cite-172540203560712">www.facebook.com/Lions-Club-Besancon-Cite-172540203560712</a>	Students in Besançon	

## HOUSING ASSISTANCE



DESCRIPTIONS	WHO PROVIDES THIS AID/SUPPORT?	HOW?	WHO IS ENTITLED TO IT?	DURATION
<b>Accommodation service</b> Even for short stays (internship, summer job, exam)	CROUS	<a href="http://www.crous-bfc.fr">www.crous-bfc.fr</a> <a href="http://courts-sejours.lescrous.fr">courts-sejours.lescrous.fr</a> 03 81 48 46 00	Students of Franche-Comté	Permanent
<b>Free platform providing accommodation announcements</b>	Lokaviz	Lokaviz.com		
<b>Financial support</b>	Caisse d'allocations familiales	<a href="http://www.caf.fr">www.caf.fr</a>		
<b>Lessor/tenant contact and tips</b>	Maison de l'Habitat du Doubs (ADIL)	<a href="mailto:contact@maisonhabitatdoub.fr">contact@maisonhabitatdoub.fr</a> 03 81 68 37 68		
<b>Rental file forming (available in english)</b>	Dossier Facile	<a href="http://www.dossierfacile.fr">www.dossierfacile.fr</a>		
<b>Zero-interest loan for security deposit</b>	Actionlogement : garantie visale	<a href="http://www.actionlogement.fr">www.actionlogement.fr</a>		
<b>Rental deposit</b>	Actionlogement : avance Loca Pass	<a href="http://www.actionlogement.fr">www.actionlogement.fr</a>		
<b>Rent contribution</b>	Actionlogement : mobili jeunes	<a href="http://www.actionlogement.fr">www.actionlogement.fr</a>		

# PSYCHOLOGICAL HELP



DESCRIPTIONS	WHO PROVIDES THIS AID/SUPPORT?	HOW?	WHO IS ENTITLED TO IT?	DURATION
<b>Medical and psychological help</b> by appointment	University of Franche-Comté SUMPPS department (The University Service of Preventive Medicine and Health Promotion)	SUMPPS <a href="mailto:sumpps@univ-fcomte.fr">sumpps@univ-fcomte.fr</a> Besançon 03 81 66 61 30 Montbéliard 03 81 90 76 10 Héricourt 03 84 90 89 05 Valentigney 03 81 36 33 10 Belfort 03 84 57 45 30  In Trévenans, the Psychiatric Emergencies, 06 25 32 00 74 who will then redirect the student if there is no recommendation of hospitalization.	Students of Franche-Comté	Permanent
<b>The Listen and Inform Hotline</b> (to listen to the students, inform accompany them)	University of Franche-Comté Student officer in charge of student precariousness	03 81 66 55 66		Monday to Friday from midday to 1:30pm and 6pm to 7:30pm.  from 19 september January to june 2023 (out of holidays)
Help, inform and prevent suicide	3114 National suicide prevention lifeline	<a href="https://www.3114.fr/">3114 Informations on line : 3114.fr 24/7</a>	Everybody	Permanent 24/7
<b>Student Psychological Health Program</b> 8 sessions with a psychologist without advance payment	Governmental scheme	Contact : <a href="mailto:sumpps@univ-fcomte.fr">sumpps@univ-fcomte.fr</a> 03 81 66 61 30  <a href="https://santepsy.etudiant.gouv.fr">https://santepsy.etudiant.gouv.fr</a>	Students of Franche-Comté	Until December 31, 2022
<b>The "Arbre à palabres" (palaver tree) meetings</b> offer international students the opportunity to discuss the difficulties they have encountered during their mobility study period.	University of Franche-Comté SUMPPS department (The University Service of Preventive Medicine and Health Promotion)	SUMPPS <a href="mailto:sumpps@univ-fcomte.fr">sumpps@univ-fcomte.fr</a> 03 81 66 61 30  At the « Maison des Etudiants », Bouloie Campus, Besançon.	International Students	20th September 18th Octobre 15th November 13th December  from 6:30 pm to 9 pm
<b>Free consultations</b> on their website, 'ENT' (digital workplace), chat, call, or video, with psychologists	Psysolidaires	<a href="https://psysolidaires.org">psysolidaires.org</a>	Students of Franche-Comté	Monday to Saturday from 9am to 9pm
<b>Appointment with a psychologist</b>	Psychiatric Emergency CHRU(hospital)	03 81 66 80 13 Emergency operator	Students of Franche-Comté	24 hours a day /7 days a week
<b>Psychological listening</b>	BAPU de Besançon Besançon University (Psychological Aid Office)	03 81 81 19 67 <a href="mailto:cmpp.bapu.besancon@wanadoo.fr">cmpp.bapu.besancon@wanadoo.fr</a>	Students of Franche-Comté	From Monday to Friday 8:30 am to 12 pm and 1:30 pm to 6:30 pm (except on Friday 6 pm), Saturday 8:30 am to 12 pm (noon)
<b>A psychologist</b> will provide free consultations to students in the department for an initial discussion (maximum 3 sessions)	University of Franche-Comté IUT Besançon Vesoul	<a href="mailto:catherine.gerardin@univ-fcomte.fr">catherine.gerardin@univ-fcomte.fr</a>	Students of the IUT Besançon / Vesoul	Occasional
<b>Prevention and family education</b>	Family Planning Center	Belfort 03 84 28 17 12	Student of Belfort	Monday from 10am to 12:30pm Wednesday from 1:30 to 4:30 pm
<b>Diagnosis and care psychological</b>	Medico-psychological Center	Pontarlier 03 81 38 58 78 Vesoul 03 84 76 92 90 Lons-Le-Saunier 03 84 82 83 23	Students of Franche-Comté	Monday to Friday 9:00 am - 6:00 pm

## PSYCHOLOGICAL HELP



DESCRIPTIONS	WHO PROVIDES THIS AID/SUPPORT?	HOW?	WHO IS ENTITLED TO IT?	DURATION
<b>Free appointments via video-consultation with a psychologist</b> (via smartphone, tablet, computer), for a benevolent and non-judgmental listening, in complete confidentiality.	CROUS Bourgogne Franche-Comté  Apsyttude	At Dijon, Besançon, Belfort et Montbéliard : <a href="mailto:rdv.apsyttude@gmail.com">rdv.apsyttude@gmail.com</a> 06 27 86 91 83  For all other cities <a href="mailto:happysyline.bfc@gmail.com">happysyline.bfc@gmail.com</a> (please specify « CROUS BFC » in the subject of the e-mail)	Students of Franche-Comté	From 9 am to 9 pm from Monday to Friday
<b>ETUCARE</b> A digital program to promote mental health for students.	IREPS BFC/ ARS (regional health education and promotion)	<a href="https://elearning.ireps-bfc.org/">https://elearning.ireps-bfc.org/</a>		Permanent
<b>Help for employed students</b>	CGT-SE	<a href="mailto:CGT.salaries.etudiants@protonmail.com">CGT.salaries.etudiants@protonmail.com</a>	Exclusively for students in health	Monday to Friday 10am-6pm
<b>Freephone support number for health students and residents:</b>  <i>The platform brings together skills in mediation social intervention, psychology, and others, to respond to the diversity of situations encountered by students, while respecting confidentiality.</i>	CNA SANTÉ (National Support Centre for the quality of life of students)	Contact : 0800 724 900 / <a href="mailto:soutien@cna-sante.fr">soutien@cna-sante.fr</a> <a href="https://cna-sante.fr/plateforme">https://cna-sante.fr/plateforme</a>		
<b>Psychological counseling</b>	National Association of Pharmacy Students of France (ANEPF)	<a href="mailto:contact@anepf.org">contact@anepf.org</a>  0805 72 49 00		

## HELP FOR VICTIMS



DESCRIPTIONS	QUI PROPOSE L'AIDE ?	COMMENT ?	QUI EST ÉLIGIBLE ?	DURÉE
<b>S.O.S Reporting/Guidance/Follow-up Let's dare to break the silence</b> Supporting victims of sexual and gender-based violence, discrimination, harassment or any other form of violence. The S.O.S. reporting system is open to staff and students, victim or witness to any form of violence within the university.	University of Franche-Comté	<a href="https://sos.univ-fcomte.fr">https://sos.univ-fcomte.fr</a>	Students, staff, external workers and users	Permanent
<b>Help for victims</b>	France Victimes Besançon Nord Franche-Comté	09 70 19 52 52 / <a href="mailto:contact@alavi.fr">contact@alavi.fr</a>		
<b>Reception, listening, accompaniment, guidance, follow-up of women victims</b>	Women's solidarity Besançon/Montbéliard	03 81 98 24 24 <a href="mailto:chrs@solidaritefemmes25.org">chrs@solidaritefemmes25.org</a>	Students of Franche-Comté	By appointment
<b>Legal information fight against sexist and sexual violence</b>	Information centre on women's and family rights (CIDFF)	03 84 28 00 24 <a href="mailto:contact.cidff25@gmail.com">contact.cidff25@gmail.com</a>		
	Collective against sexual harassment in higher education (CLASCHEs)	<a href="https://clasches.fr/">https://clasches.fr/</a>		
<b>Help for people in prostitution</b>	Mouvement du Nid Délégation du Doubs	03 81 83 02 03 06 07 95 95 24 <a href="http://franchecomte-25@mouvementdunid.org">franchecomte-25@mouvementdunid.org</a>		



## SOCIAL AND FINANCIAL ASSISTANCE

DESCRIPTIONS	WHO PROVIDES THIS AID/SUPPORT?	HOW?	WHO IS ENTITLED TO IT?	DURATION
<b>Reception and social integration of international students</b>	Student Association ESN Besançon	<a href="mailto:info@erasmus-besancon.com">info@erasmus-besancon.com</a>	Students Besançon on all campuses	Permanent
<b>Creation of social links / Moral support for students / Creation of adapted radio programs</b>	Student Association Radio Campus Besançon	<a href="mailto:admin.rcb@orange.fr">admin.rcb@orange.fr</a> 03 81 80 37 63		
<b>Daily living assistance and financial support</b>	CROUS BFC	<a href="https://mesrdv.etudiant.gouv.fr">mesrdv.etudiant.gouv.fr</a>		
<b>Legal assistance and advice for students who encounter difficulties in their jobs.</b>	CGT Salariés Etudiants	<a href="mailto:cgt.salaries.etudiants@protonmail.com">cgt.salaries.etudiants@protonmail.com</a>	Working students in the Doubs département	
<b>Activity bonus</b>	Caisse d'allocations familiales ou CAF (Family allowance fund)	<a href="http://www.caf.fr">www.caf.fr</a>	Working students	
<b>Unemployment rights</b>	Pôle Emploi (Job center)	<a href="http://www.pole-emploi.fr">www.pole-emploi.fr</a>	Working students who have lost their job	
<b>Departmental fund to help young people</b>	Conseil départemental du Doubs (Doubs Departmental Council)	CROUS <a href="mailto:social.25@crous.fr">social.25@crous.fr</a>  Departmental medical and social centers <a href="http://www.doubs.fr/CMS">www.doubs.fr/CMS</a> In Besançon : CMS Saint-Claude : 03 81 50 31 41 CMS Tristan Bernard : 03 81 25 44 44 CMS Montrapon : 03 81 50 42 84 CMS BACCHUS : 03 81 25 87 00 CMS Planoise : 03 81 51 00 41	Students Apprentices Young adults	
<b>PLoans in the form of micro credit 0% interest rate</b>  -No application fees -No personal guarantee or guarantee from a third party -Deferment period : 12 months maximum -Repayment from 6 to 48 months (including deferment)	Banking institutions and social and solidarity institutions	<b>Eligibility criteria :</b>  - No access to traditional student credit - Being a student (presentation of a proof of schooling) - Holder of a student job before the 1st lockdown (presentation of a pay slip) - Being in financial difficulty (basic needs including cash flow)	Students of Franche-Comté	Permanent
<b>Specific assistance for students facing severe financial difficulty</b> One-off benefits or annual allocation for long-term difficulty	CROUS	<a href="http://etudiant.gouv.fr/aides-specifiques/">etudiant.gouv.fr/aides-specifiques/</a> et au 0 806 000 278		





## ASSISTANCE FOR WELL-BEING AND SOCIAL INTERACTION

DESCRIPTIONS	WHO PROVIDES THIS AID/SUPPORT?	HOW?	WHO IS ENTITLED TO IT?	DURATION
<p><b>Sport on prescription:</b> doubling and expanding the offer of a free teaching unit</p> <p><b>Video clips of sport sessions</b></p> <p><b>Sport sessions between noon and 2 pm</b></p>	University of Franche-Comté Campus Sports	<p><a href="http://u-sports.univ-fcomte.fr/index.html">u-sports.univ-fcomte.fr/index.html</a> 03 81 66 63 62</p>	Students of Franche-Comté	Permanent
<p><b>Relaxation activities and wellness workshops</b> ("Wellness Night" and "Zen'études" during the exam period)</p>				
<p><b>Artistic workshops in video</b> (theater, press drawing, writing, artist's book, etc.)</p>	University of Franche-Comté Science, arts and culture department	<a href="mailto:ghislaine.gaultier@univ-fcomte.fr">ghislaine.gaultier@univ-fcomte.fr</a>		
<p><b>Intercultural, artistic or sports activities</b></p>	University of Franche-Comté ESN association Besançon	<a href="mailto:president@erasmus-besancon.com">president@erasmus-besancon.com</a>	International students Besançon all campuses	Permanent



## EDUCATIONAL ASSISTANCE

DESCRIPTIONS	WHO PROVIDES THIS AID/SUPPORT?	HOW?	WHO IS ENTITLED TO IT?	DURATION
<p><b>Opening of the computer rooms</b></p> <p><b>Tutoring / Educational support</b></p>	University of Franche-Comté Faculties / Institutes / Schools	<p>Contact the Faculties</p> <p><a href="mailto:bve-infos@univ-fcomte.fr">bve-infos@univ-fcomte.fr</a> 03.81.66.66.99</p>	Students Franche-Comté	Permanent
<p><b>Opening of the BU and computer rooms</b></p>				
<p><b>Job search programs or internships workshops throughout the year</b> We have set up pedagogic tools for every situation. The scheduled workshops are maintained, with distance learnings.</p>	OSE Orientation Internship Employment Department	<p><a href="mailto:ose@univ-fcomte.fr">ose@univ-fcomte.fr</a></p> <p><a href="https://www.univ-fcomte.fr/orientation-etinsertion-professionnelle#YbDQn9_jLQw">https://www.univ-fcomte.fr/orientation-etinsertion-professionnelle#YbDQn9_jLQw</a></p>	Students, apprentices or trainees in continuing education of the University of Franche-Comté	

### SCREENING

**Covid test campaign** for all Besançon students from 11:45 a.m. to 1:15 p.m., Monday to Friday, at the SUMPPS offices  
Vaccination days on February 2022 : 15 (from 2 p.m. to 4 p.m.) and 16 (from 2 p.m. to 4 p.m.) by appointment.  
Information at SUMPPS department : [sumppss@univ-fcomte.fr](mailto:sumpss@univ-fcomte.fr) / tél. 03 81 66 61 30

How health insurance covers a Covid-19 screening test  
[https://solidarites-sante.gouv.fr/IMG/pdf/annexe\\_1\\_-\\_flyer\\_remboursement\\_test\\_covid.pdf](https://solidarites-sante.gouv.fr/IMG/pdf/annexe_1_-_flyer_remboursement_test_covid.pdf)

## FUNDS AVAILABLE TO SET UP A PROJECT

STRUCTURES	FOR WHOM ?	CONTACT
<b>FSDIE</b> (Fund of solidarity and development of student initiatives)	Associations, groups or individual students	<a href="mailto:fsdie@univ-fcomte.fr">fsdie@univ-fcomte.fr</a>
<b>DISPOSITIF CULTURE ACTIONS</b>	Financial support for every projet conducted by students and student associations	<a href="mailto:frederic.sonnet@crous-bfc.fr">frederic.sonnet@crous-bfc.fr</a>
<b>PARTICIPATIVE BUDGET</b>	Students of the University of Franche-Comté	<a href="mailto:bve@univ-fcomte.fr">bve@univ-fcomte.fr</a>
<b>CALL FOR PROJECTS TO SUPPORT STUDENT ASSOCIATION INITIATIVES IN THE BFC REGION</b>	<b>Funds available for any accredited association</b> of the University of Franche-Comté.	<a href="mailto:bve@univ-fcomte.fr">bve@univ-fcomte.fr</a>
<b>FIE MONTBÉLIARD (Student Initiative Fund)</b>	<b>Pays Montbéliard Agglomération</b> encourages student association projects, particularly through the 'Fonds d'Initiatives Étudiant' or Student Initiative Fund.	<a href="mailto:magali.gauthrot@agglomontbeliard.fr">magali.gauthrot@agglomontbeliard.fr</a>
<b>CAP JEUNES</b>	<b>Grant available for young people from 16 to 25 years old living in the Territory of Belfort</b> for the implementation of citizen and socially responsible projects.	<a href="mailto:estelle.menissier@territoiredebelfort.fr">estelle.menissier@territoiredebelfort.fr</a> Tél. 03 84 21 98 50
<b>CLAP (Local Committee of Aid to Projects)</b>	<b>The Local Project Assistance Committee supports and finances projects</b> with a civic, humanitarian, social, sporting or cultural purpose for young people between the ages of 11 and 30.	<a href="mailto:olivier.poulot@jeunes-bfc.fr">olivier.poulot@jeunes-bfc.fr</a>
<b>CONCOURS DÉCLICS JEUNES ('CLICKS YOUTH CONTEST')</b>	<b>This contest is open to all young people between 18 and 30 years old, of French or foreign nationality</b> (but living in France and proving a good knowledge of the French language), who have a passion or a vocation and who wish to put it into practice by implementing an individual, innovative and useful project.	<a href="mailto:projets@fdf.org">projets@fdf.org</a>
<b>GRANTS OF THE ASSOCIATIVE LIFE DEPARTMENT OF THE CITY COUNCIL OF BESANÇON</b>	<b>Associations based in Besançon</b> , created and declared to the Prefecture in the two years preceding the date of submission of the application, whose associative project in any field is in line with a dynamic of sustainable establishment in the territory	<a href="mailto:vieassociative@besancon.fr">vieassociative@besancon.fr</a>
<b>DRAC : Regional Directions of Cultural Affairs</b>	<b>Associations, individuals, structures.</b>	<a href="http://www.culture.gouv.fr/Aides-demarches/Subventions">www.culture.gouv.fr/Aides-demarches/Subventions</a>
<b>BFC International</b>	<b>Associations, individuals, structures.</b>	<a href="http://www.bfc-international.org">www.bfc-international.org</a>

**Université de Franche-Comté**

**Student Life Office**

Besançon

03 81 66 66 99 / 58 47

Belfort, Montbéliard, Vesoul et Lons-le-Saunier

07 62 94 95 83

[bve@univ-fcomte.fr](mailto:bve@univ-fcomte.fr)

**UNIVERSITĕ** **de**  
**FRANCHE-COMTĕ**